

# SINFONIA TECHNOLOGY CO., LTD.

Company name changed from SHINKO ELECTRIC CO., LTD. as of April 2009.

## Color Stream® CHC-S1245



## Escalate your value with **8"x10" & 8"x12"** **30 second solution\***

### Fastest Speed

\*The 8"x10" print result can be made within 30 seconds, and the 8"x12" - within 35 seconds and these are the fastest speed in roll type large format printer.

The experience of our dye-sub printer technologies now introduces high speed, 8"x12" size, and roll-fed printer CHC-S1245.

### Competitive consumable price

Printer consumable is less expensive than existing 8"x10" and 8"x12" cut sheet printer.

CHC-S1245 accelerates your business expansion with competitive price and high value of print.

### Multiple Print

Not only full size print but also multiple print is available. The details are shown in the back.

### Roll-Fed

Roll-Fed mechanism gives printer edge-to-edge print, paper-jam free, and low-waste operation, comparing with cut sheet printer.

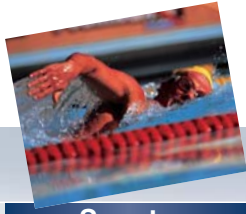
- ▶ Low waste — Edge-to-edge print enable to reduce cutting area of prints.
- ▶ Paper-jam free — roll-fed structure has superiority in anti-paper-jam provision, carrying out stabilized paper feeding.

### Robust Printer

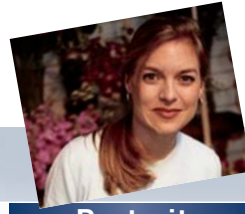
S1245 takes over simple and tough mechanism from S1045 series which recorded one of the best sales in the dye-sub printers.



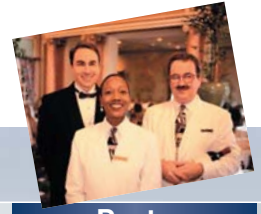
Landscape



Sports



Portrait



Party

# Excellent memory with excellent photo

8x10 & 8x12 size of print is active in various situations as scenery, sports, portrait, cruising, wedding, travelphoto, etc

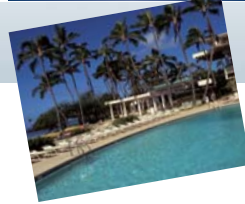
Cruising



Wedding



Travel



Kids



## specifications

Model	CHC-S1245	
Print method	Dye sublimation thermal transfer	
Resolution	300dpi	
Print size	203.0mm x 254.0mm(8 inch x 10 inch) / 203.0mm x 304.8mm(8inch x 12inch)	
Multiple print	(8x4")x2, (8x5")x2, (8x4" & 8x6") with 8x10" / (8x6")x2, (8x4")x3 with 8x12"	
No.of prints	280 per roll (8x10") / 230 per roll (8x12")	
Printing time	8x10"	30 sec. per sheet(standard mode), 39 sec. per sheet(high quality mode)(*1)
	8x12"	35 sec. per sheet(standard mode), 46 sec. per sheet(high quality mode)(*1)
Ink ribbon	YMC+OP	
Paper	Roll-to-cut, Automatic feed	
Buffer memory	32 M byte x 2	
Interface	USB 2.0	
Printer driver, software	Windows® Driver(2000/XP/Vista®), DLL(SDK)	
Power consumption	480W	
Power supply	AC100V - 120V/220V - 240V Auto-switching	
Dimensions	342mm(W) x 345mm(H) x 489mm(D)	
Weight	28kg(61.8lb)	
Regulations	UL, cUL, FCC, Class A, RoHS(*2)	
Accessories	Dust box, Print Catcher, Power Cable	

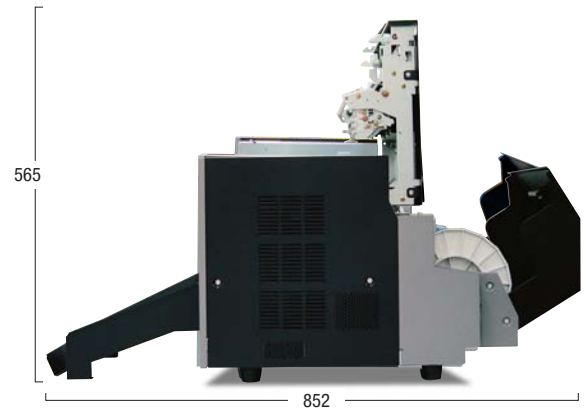
\*1: not incl. Data transferring time

\*2: Other regulations planned to be applied.

Microsoft® and Windows Vista® are either registered trademarks or trademarks of Microsoft Corporation in the United States and/or other countries.

## Dimension

unit : mm



852



### CAUTION!

- Before use, read the instruction manual carefully to ensure safe operation.
- Do not position in wet, humid, dusty or smoky environments. This may result fire, breakdown or electric shock.

Company name changed from SHINKO ELECTRIC CO., LTD. as of April 2009.

## SINFONIA TECHNOLOGY CO., LTD.

<http://www.sinfo-t.jp/eng/printers.html>

Head office: Shiba NBF Tower, 1-30, Shiba-daimon 1-chome, Minatoku, Tokyo, 105-8564 Japan

Phone: +81-3-5473-1819 Fax: +81-3-5473-1844

Company and product names in this catalog are registered trademarks. Due to technical upgrading, design and specifications are subject to change without notice. Images shown on screens or as prints are composites.